

ADDING IMAGES THROUGH THE WYSIWYG EDITOR

Content	Structure	Appearance	Configuration
Add content		Articles	
Books		Blog entry	
Webforms		Book Fair Pages	
		Book page	
		Non-Taxable Products	
		Online Only Gift Code	
		Page	

Body (Edit summary)



Image Properties [X]

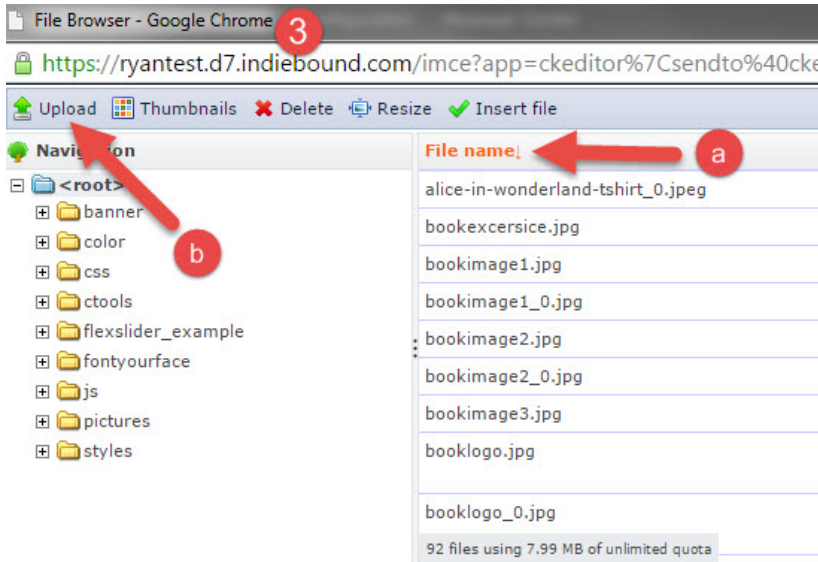
Image Info | Link | Advanced

URL (2)

Alternative Text

Width Height

Preview
Lorem ipsum dolor sit amet, consectetur adipiscing elit. Maecenas feugiat consequat diam. Maecenas metus. Vivamus diam purus, cursus a, commodo

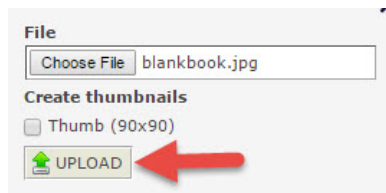
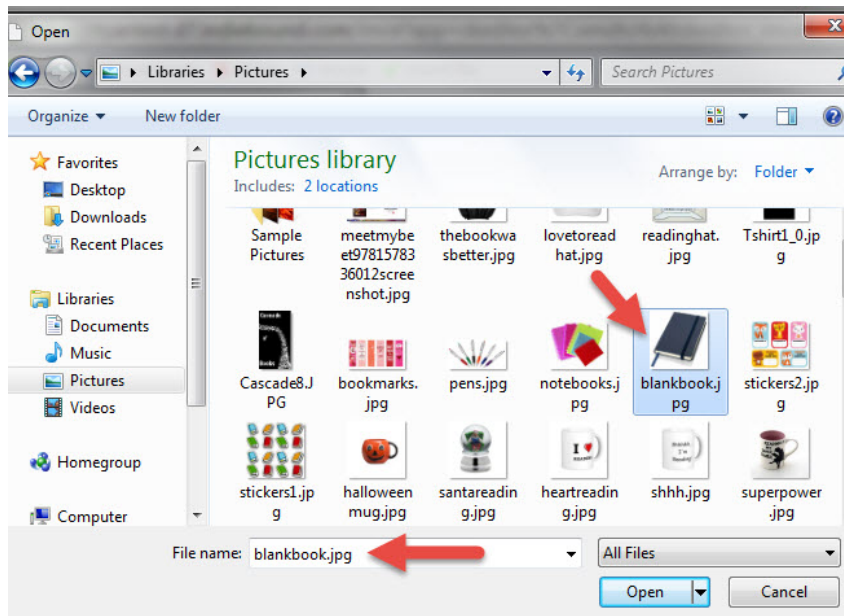


File [X]

Choose File No file chosen

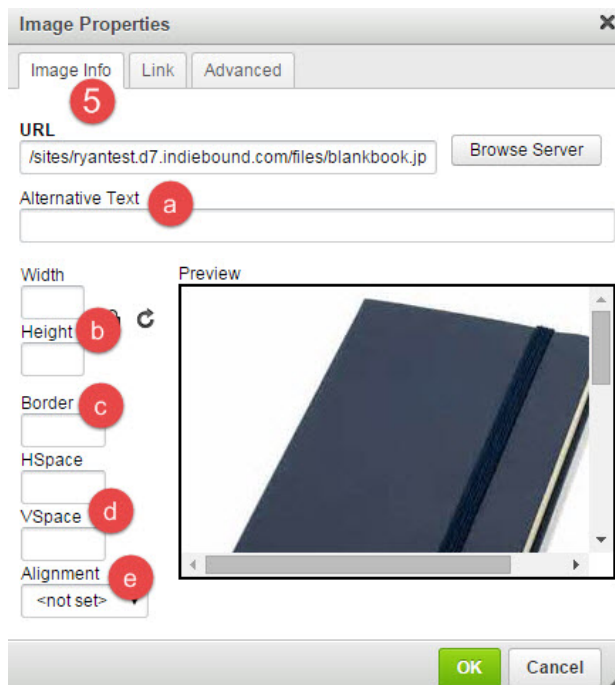
Create thumbnails

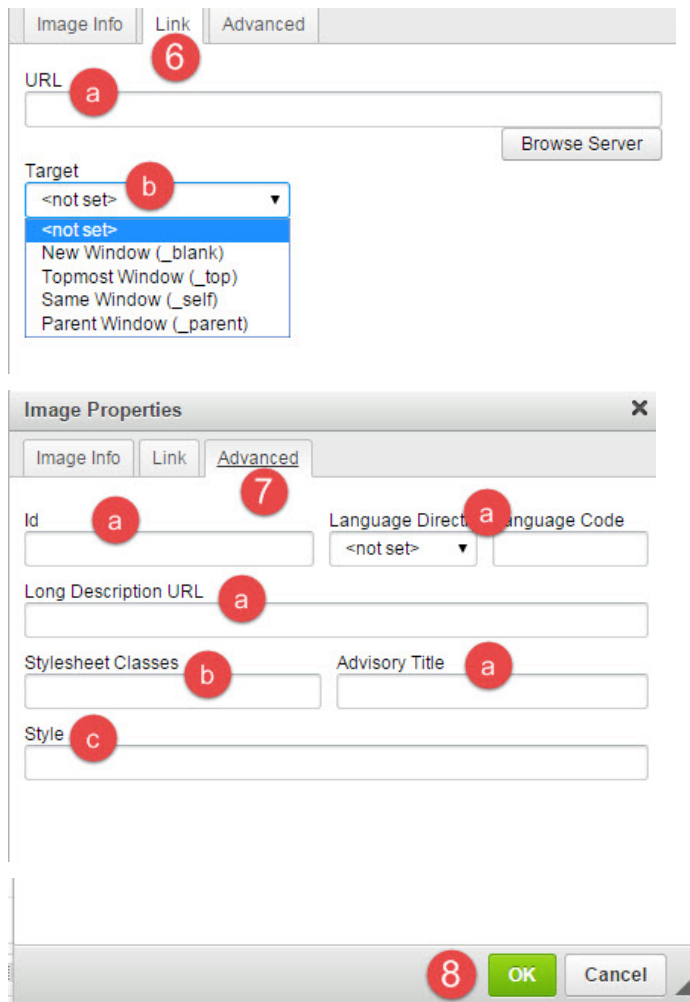
Thumb (90x90)



superpower.jpg	3.89 KB	173	153	10/27/2015 - 10:04am
thatnight.JPG	3.73 KB	93	140	05/11/2015 - 9:11am
thebookwasbetter.jpg	6.11 KB	270	187	11/06/2015 - 12:30pm
ticket.jpg	6.77 KB	244	176	10/15/2015 - 8:10am
wearecalledtorise.JPG	4.21 KB	91	140	05/11/2015 - 9:07am
wonderland.JPG	3.65 KB	93	140	05/11/2015 - 9:13am
blankbook.jpg	7.68 KB	300	300	11/17/2015 - 9:33am

93 files using 7.99 MB of unlimited quota

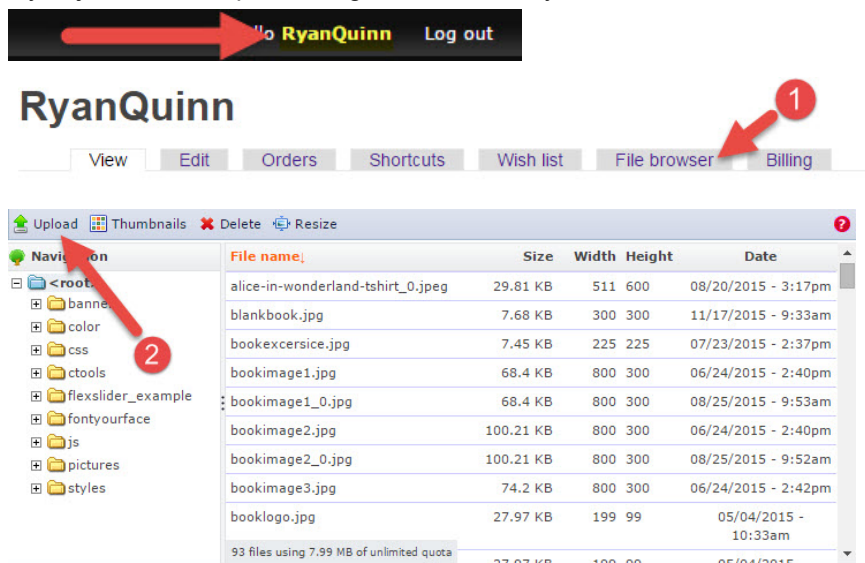


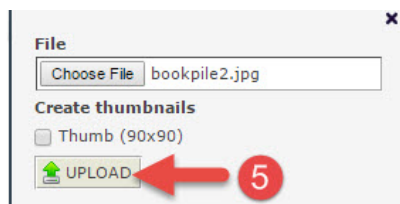
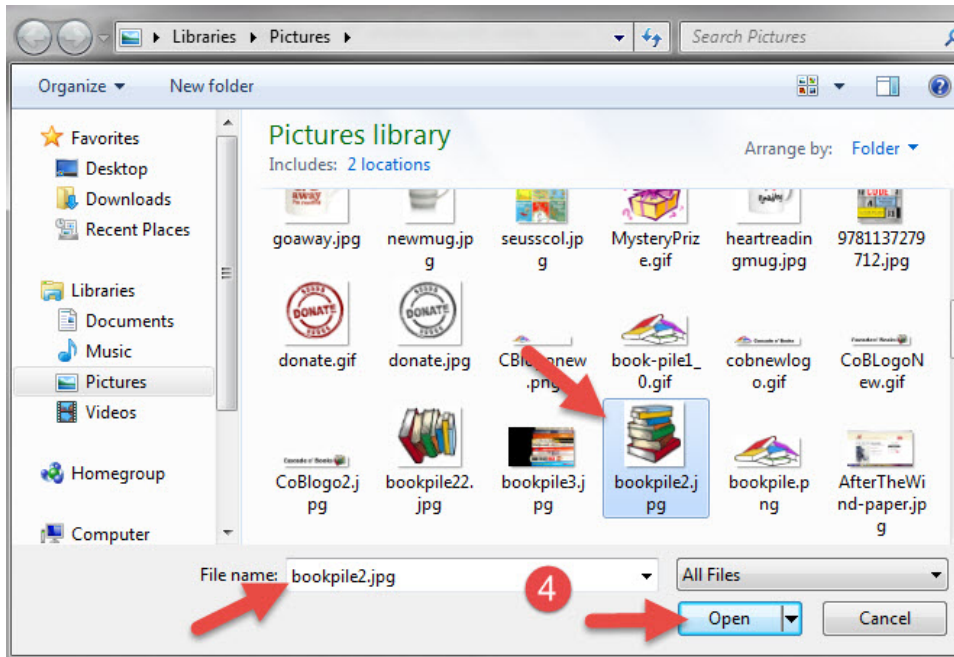
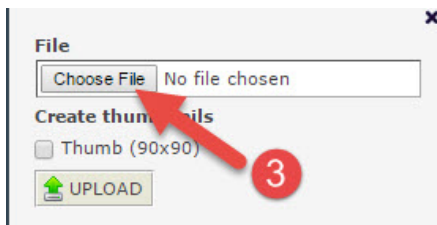


Your image should appear in the body of the WYSIWYG editor now. You can continue editing the page or save it.

ADDING IMAGES TO THE FILE BROWSER DIRECTLY

If you just want to upload images for use later you can add them to the file browser directly.





The file has been uploaded to your website and will remain there unless manually deleted. You can use the instructions above under 'Adding Images Through The WYSIWYG Editor' to place the image on your site at a later time.